

EMERGENCY TOWING VESSEL

200 t BP



TYPE

Abeille Bourbon IMO 93 08 687
Abeille Liberté IMO 93 08 699
 Built in 2004, Kleven, Norvège
 Emergency Towing Vessel, FIFI II

CLASSIFICATION

BV I ⚡ HULL, ⚡ MACH, Salvage tug, Unrestricted navigation, AUT-UMS, Fire Fighting ship 2, Dynapos AM/AT

MAIN PARTICULARS

Lenght OA	80,00 m
Length between PP	68,60 m
Width OA	16,50 m
Moulded breadth	8,00 m
Max. draught	6,00 m max.
Max. speed	19,9 knots
Economic speed	12 knots
Autonomy	45 days at 12 knots
Bollard pull	200 t

PROPULSION

Main Engines	4 x 4 000 kW at 600 rpm
Propellers	2 x CPP with nozzle diameter 3.90 m
Stern thrusters	2 x 515 kW
Bow thrusters	2 x 883 kW

ELECTRICAL PRODUCTION

Shaft generators	2 x 1 920 kW
Diesel generators	3 x 530 kW at 1 500 rpm
Emergency generators	1 x 160 kW at 1 500 rpm

DECK EQUIPMENT

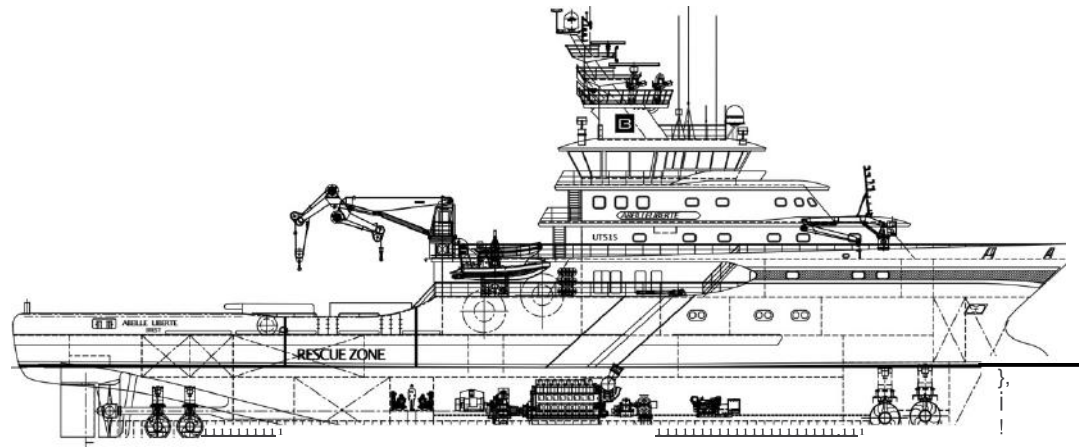
Towing winch	1 x winch double drum, Each 1 600 m, 80 mm cable 250 t at 16 m/min 1 st layer Brake force 500 t
Tugger winch	1 x 20 t, 250 m, 32 mm cable
Capstans	2 x hydraulic capstans, 10 t
Main crane	1 x swivel arm, cap. 23 t at 11 m
Grue secondaire	1 x swivel arm, cap. 1 t at 9 m
Embarkations	2 x FRC, lenght 7.0 m, with 2 single arm davits
Firefighting	2 x FIFI pumps & 3 x FIFI monitors 1 x Foam monitor
Pollution response	1 x dispersant pump 2 x spreading booms
Various	2 x towing cable drums 1 x set of 2 towing pins 1 x shark-jaw 2 x windlasses

CAPACITIES

MDO	1 632 m ³
Fresh water	126 m ³
Ballast	1 082 m ³
Foam	28 m ³
Dispersant	54 m ³

ARRANGEMENTS

Total persons	25 personnes
Cabins	15 x single cabins 1 x double cabin 2 x 4 pax cabins



PROFILE

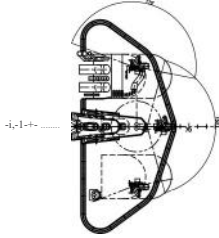
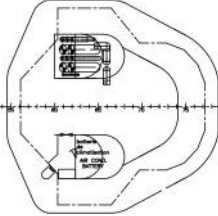
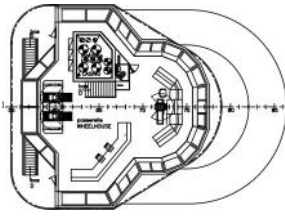


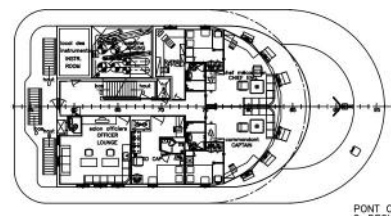
PLATE-FORME ANTI-FEU
FIFI-PLATFORM



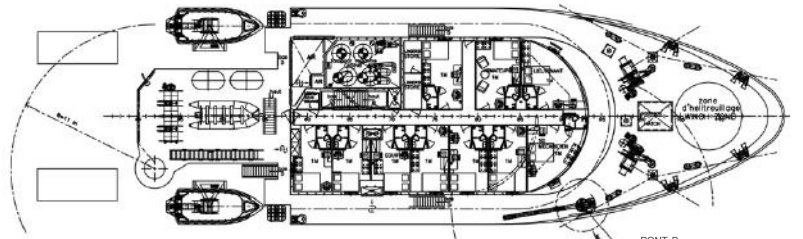
DESSUS DE LA PASSERELLE
WHEELHOUSE TOP



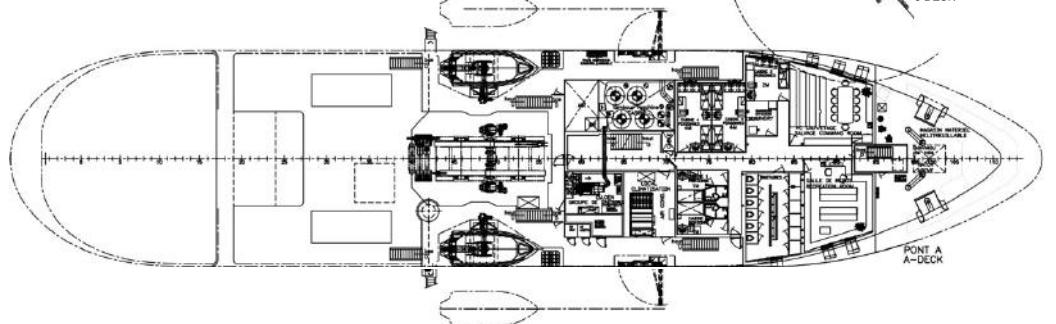
PONT DE LA PASSERELLE
BRIDGE DECK



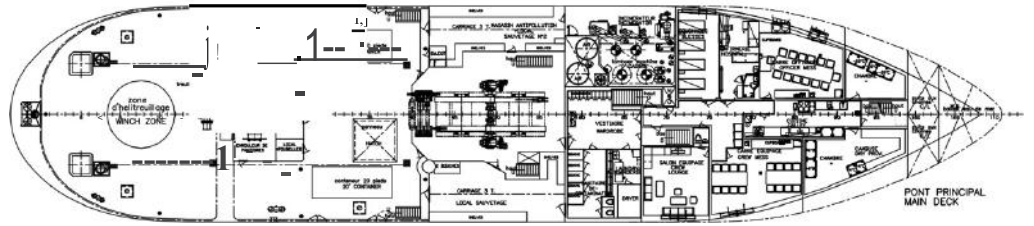
PONT C
C-DECK



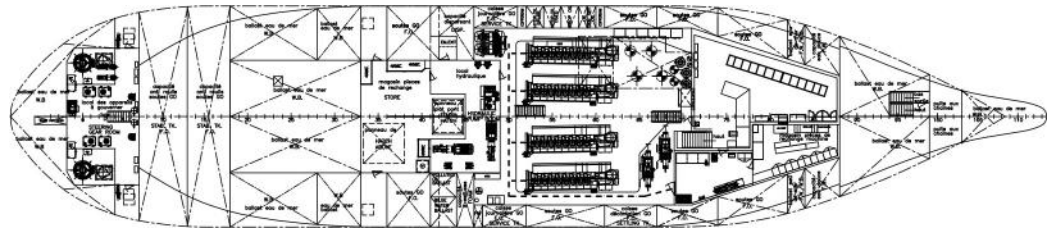
PONT B
B-DECK



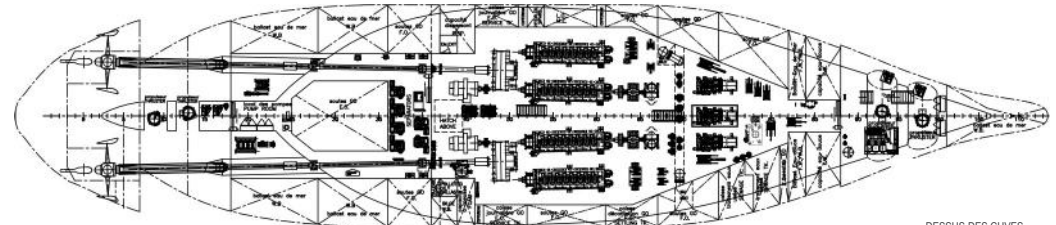
PONT A
A-DECK



PONT PRINCIPAL
MAIN DECK



ENTREPONT
TWEEN DECK



DESSUS DES CUVES
TANK TOP