

OIL RECOVERY Multipurpose ship 120 t BP



TYPE

Jason IMO 93 20 922

Built in 2005 in Singapour
Oil Recovery Ship, FIFI 2

CLASSIFICATION

BV I HULL, MACH, Tug, Supply Vessel
Unrestricted navigation, AUT-UMS, MON-SHAFT
Fire Fighting ship 1, Water Spraying, Oil Recovery Ship
Dynapos AM/AT- R (Class 2)

MAIN FEATURES

Length overall	67,40 m
Width overall	15,50 m
Moulded Breadth	7,00 m.
Max draught	6,50 m
Maximum speed	14 knots
Economic speed	11,5 knots
Bollard pull	126 t

PROPULSION

Main Engines	2 x 4105 kW, 1000 rpm
Propellers	2 x CPP with nozzle
Stern Thruster	1 x 600 kW FPP
Bow Thrusters	2 x 600 kW FPP

ELECTRICAL PRODUCTION

Shaft generator	2 x 1 600 kW
Diesel generator	3 x 400 kW à 1 800 rpm
Emergency generator	1 x 81 kW à 1 800 rpm

DECK EQUIPMENT

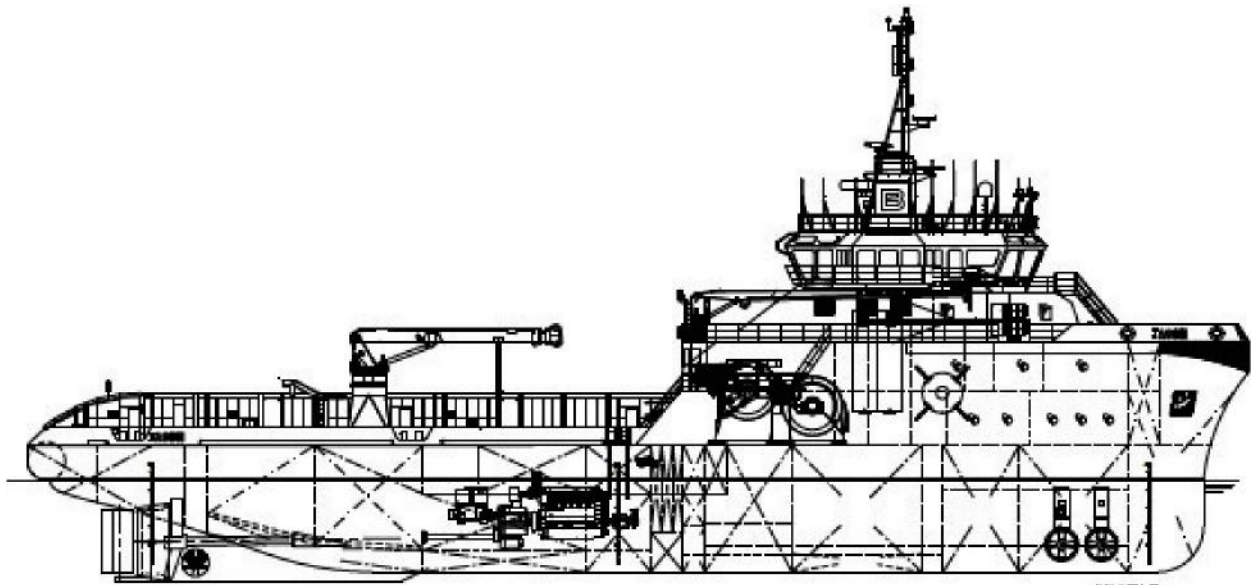
Towing winch	1 x double drum winch, 1 cable 1 370 m dia 64 mm 1 cable 1 050 m dia 76 mm 250 t at 16 m/min 1 ^{ère} layer Brake force 300 t
Tugger	2 x tuggers, 10 t at 18m/min
Cabstans	2 x hydraulic cabstans, 10 t
Main crane	1 x telescopic crane, 23 t at 7 m - 8 t at 20 m
Auxiliary crane	1 x fixed jib, capacity 2 t at 15 m
Craft	1 x FRC on davit, 1 x Workboat 16 pax, 115 CV
Firefighting	2 x FIFI pumps FiFi2 x monitors
Pollution response	1 x dispersant pump 2 x spreading booms 1 x floating barrage 300 m
Others	2 x towing cable drums 1 x set of 2 towing pins 1 x set of 2 Karmfork 2 x windlasses 1 x stern roll 300 t

CAPACITIES

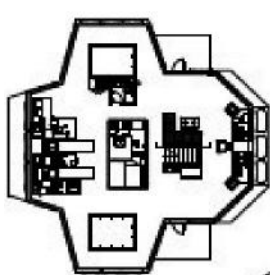
Oilrec (ORO)	1000 m ³
MDO	878 m ³
Fresh Water	234 m ³
Ballast	500 m ³
Foam	62 m ³
Dispersant	62 m ³

ARRANGMENTS

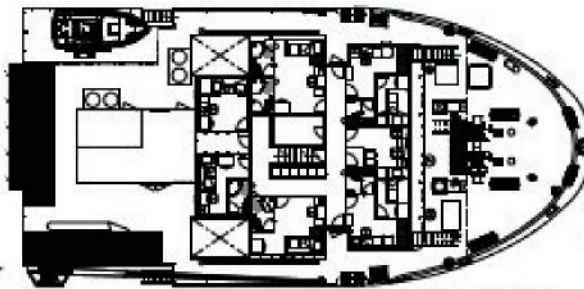
Crew + pax	30 persons
Cabins	10 x single cabins 2 x double cabins 4 x 4pax cabins



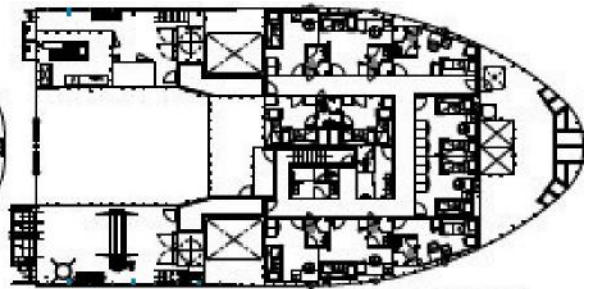
PROFILE



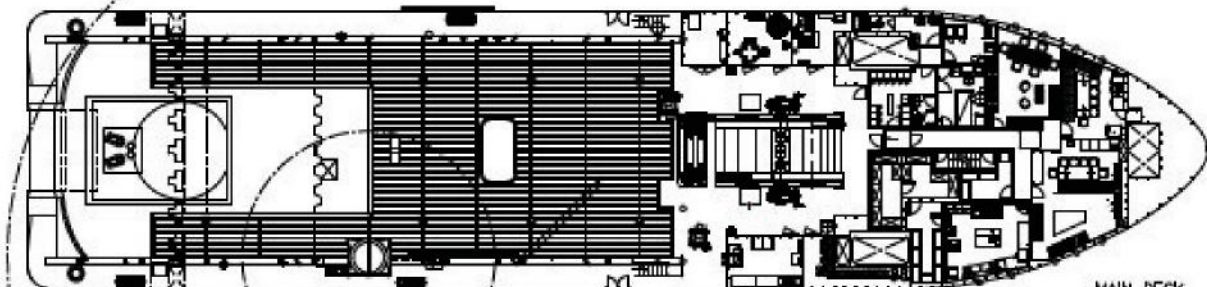
WHEELHOUSE



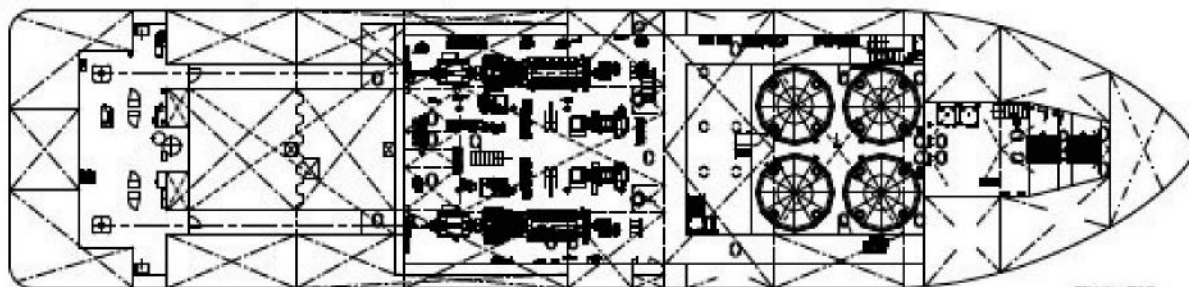
UPPER FORECASTLE DECK



LOWER FORECASTLE DECK



MAIN DECK



TANK TOP